

IGNIX R1 R1PRO

ERGONOMIC GAMING MOUSE
BLACK | WHITE

MANUAL BOOK

TERIMA KASIH TELAH MENGGUNAKAN PRODUK VORTEXSERIES

Pelanggan Yang Terhormat,

Terima kasih atas kepercayaan dan kesetiaan dalam memilih produk kami. Kami sangat menghargai hubungan yang telah kami bangun. Kami berkomitmen untuk memenuhi harapan dan memberikan pelayanan terbaik. Terima kasih atas kesempatan untuk melayani pengguna produk kami!

Salam Hormat



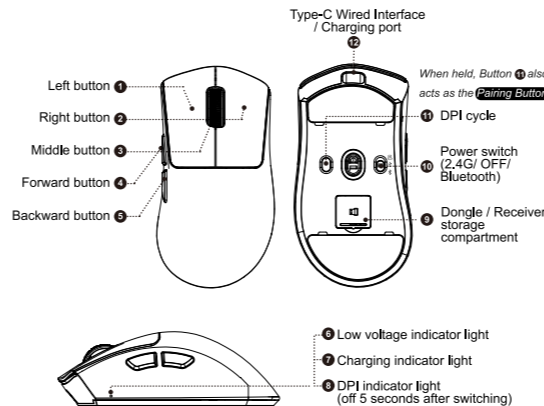
VortexSeries

Product Description

English

VortexSeries IGNIX R1		
MODEL SERIES	IGNIX R1	IGNIX R1 PRO
SIZE DIMENSIONS (L X W X H)	127,69mm x 67,76mm x 42,84mm	
COATING	STANDARD COATING	ICE COATING
SENSOR	PIXART PAW 3311	PIXART PAW 3395 PRO
MCU	Broadcom BK3633	
TRACKING SPEED	400 IPS	700 IPS
ACCELERATION	40G	60G
MAX DPI	ADJUSTABLE to 24,000 DPI	ADJUSTABLE to 40,000 DPI
WEIGHT	60g ± 3g	
MICRO SWITCH	HUANO TRANSPARENT BLUE SHELL PINK DOT MICRO SWITCH 80M CLICKS	OMRON D2FC-F-7N(100M) MICRO SWITCH 100M CLICKS
SOFTWARE	WEB DRIVER SUPPORT & DOWNLOADABLE SOFTWARE	
SCROLL ENCODER	F SWITCH ENCODER	
FEET MATERIAL	MAGIC ICE SKATES	
CONNECTIVITY	WIRED USB TYPE C, WIRELESS DONGLE 2.4G, BLUETOOTH	
POLLING RATE	Up to 1000Hz Wireless and Wired Connection (133Hz on Bluetooth)	
BATTERY CAPACITY	500mAh	

Button Function Description



Kind tips :

1.Sleep Mode and wake up method

The mouse will enter deep sleep mode after being idle for a while. The mouse will wake up with either a button press or mouse movement.

Sleep mode duration can be adjusted through software

2.DPI Colour (adjustable in the driver)

LED color indicates active DPI (IGNIX R1):

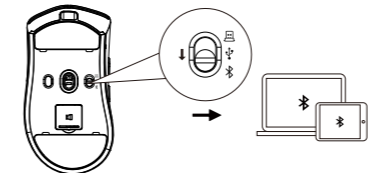
Red (800), Green (1600), Blue (2400), Yellow (3200), Cyan (8000), Purple (24000)

LED color indicates active DPI (IGNIX R1 PRO):

Red (1200), Green (2400), Blue (3200), Yellow (5600), Cyan (8000), Purple (40000)

Connection Mode

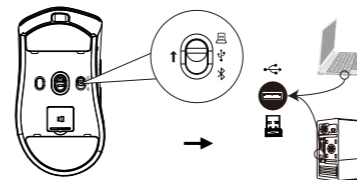
1.Bluetooth connection method:



1. The power switch must be in the Bluetooth segment;

2. Hold the pairing button (4) for about three seconds until the Bluetooth light flashes quickly. Next, enable Bluetooth on your mobile phone or other device that you want to pair. When "IGNIX R1 / R1 PRO" appears, select it to connect. Once the connection is successful, the pairing light will briefly stay on and then turn off.

2.Wireless dongle 2.4G method:

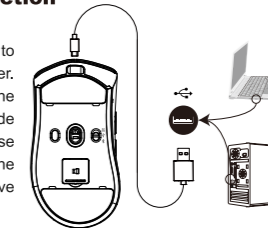


1. To use the mouse on the 2.4G channel, switch the power button to the 2.4G position. Then, remove the 2.4G receiver and plug it into an available USB port on your computer. The computer will automatically recognize the configuration. If there's no response when you plug in the receiver, try using a different USB port. Alternatively, the mouse light will briefly stay on and then turn off.

Visit vortexseries.net to download the software and find information about the product warranty and other details.

3.Wired mode connection method

Use the provided TYPE-C cable to connect the mouse to the computer. Once the cable is plugged in, the mouse will default to wired mode and begin charging. You can use the mouse normally, and the computer screen pointer will move as you move the mouse.



PRECAUTIONS

- ⚠ It is forbidden to immerse the mouse in liquid or spray the mouse with liquid
- ⚠ It is forbidden to use the mouse in high temperature and high humidity environment
- ⚠ Do not place the mouse in an open flame
- ⚠ Violence against pressing the mouse is prohibited
- ⚠ Do not disassemble the mouse



MORE INFORMATION :

