

IGNIX F7 XTREME

GAMING MOUSE
Tri-Mode Wireless Gaming Mouse

MANUAL BOOK

TERIMA KASIH TELAH MENGGUNAKAN PRODUK VORTEXSERIES

Pelanggan Yang Terhormat,

Terima kasih atas kepercayaan dan kesetiaan dalam memilih produk kami. Kami sangat menghargai hubungan yang telah kami bangun. Kami berkomitmen untuk memenuhi harapan dan memberikan pelayanan terbaik. Terima kasih atas kesempatan untuk melayani pengguna produk kami!

Salam Hormat

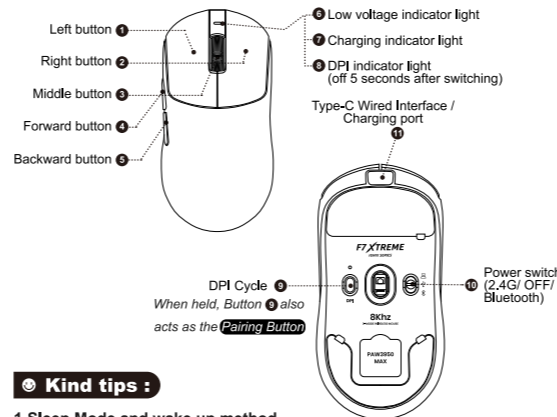


VortexSeries

Product Description

VortexSeries IGNIX F7 Xtreme	
SIZE DIMENSIONS (L X W X H)	125,52mm x 63,41mm x 39,91mm
COATING	ICE COATING
SENSOR	PIXART PAW 3950 MAX
MCU	NORDIC 54L15 (nRF54L15)
TRACKING SPEED	750 IPS
ACCELERATION	50G
MAX DPI	Adjustable to 42,000 DPI
WEIGHT	56g ± 3g
MICRO SWITCH	OMRON D2FP-FN2 OPTICAL SWITCH 100m
SOFTWARE	WEB DRIVER SUPPORT & DOWNLOADABLE SOFTWARE
SCROLL ENCODER	F SWITCH ENCODER
FEET MATERIAL	MAGIC ICE SKATES
CONNECTIVITY	WIRED USB TYPE C, WIRELESS DONGLE 2.4G, BLUETOOTH
POLLING RATE	Up to 8000Hz on Wireless Dongle Up to 8000Hz on Wired 235hz on Bluetooth
BATTERY CAPACITY	500mAh

Button Function Description



Kind tips :

1.Sleep Mode and wake up method

The mouse will enter deep sleep mode after being idle for 10 seconds to 40 minutes (default: 1 minute). The mouse will wake up with either a button press or mouse movement.

Sleep mode duration can be adjusted through software

2.Receiver Light Indicator (adjustable in the driver)

LED color indicates active polling rate:

Red (125Hz), Blue (250Hz), Yellow (500Hz), Orange (1000Hz), Purple (2000Hz), Green (4000Hz), Cyan (8000Hz).

LED color reflects remaining battery:

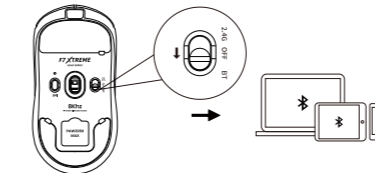
Green (100%), Yellow (66%), Orange (33%), Red (15%).

Battery Warning Only:

LED stays off and flashes red only when the battery is low.

Connection Mode

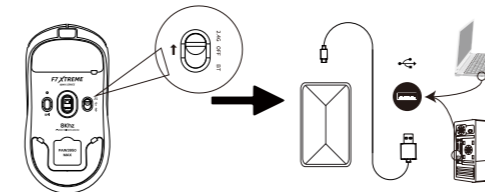
1.Bluetooth connection method:



1. The power switch must be in the Bluetooth segment;

2. Hold the pairing button 9 for about three seconds until the Bluetooth light flashes quickly. Next, enable Bluetooth on your mobile phone or other device that you want to pair. When "F7 Xtreme" appears, select it to connect. Once the connection is successful, the pairing light will briefly stay on and then turn off.

2.Wireless dongle 2.4G method:

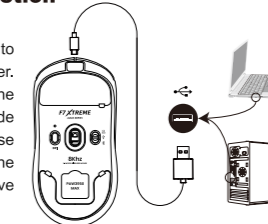


1. Switch the power button to the 2.4G position. Connect the USB-A end of the included Type-C cable to your computer, then plug the Type-C end into the 2.4G receiver dongle. Once connected, the receiver will establish a wireless link with the mouse automatically. If the mouse does not respond, try using a different USB port. When the connection is successful, the mouse indicator light will briefly turn on before turning off.

Visit vortexseries.net to download the software and find information about the product warranty and other details.

3.Wired mode connection method

Use the provided TYPE-C cable to connect the mouse to the computer. Once the cable is plugged in, the mouse will default to wired mode and begin charging. You can use the mouse normally, and the computer screen pointer will move as you move the mouse.



PRECAUTIONS

- ⚠ It is forbidden to immerse the mouse in liquid or spray the mouse with liquid
- ⚠ It is forbidden to use the mouse in high temperature and high humidity environment
- ⚠ Do not place the mouse in an open flame
- ⚠ Violence against pressing the mouse is prohibited
- ⚠ Do not disassemble the mouse