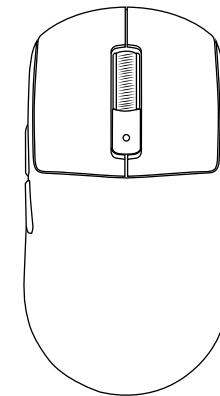


INNO X3 PRO | X3



TRI - MODE LIGHTWEIGHT GAMING MOUSE
USER MANUAL

TERIMA KASIH TELAH MENGGUNAKAN PRODUK VORTEXSERIES

Pelanggan Yang Terhormat,

Terima kasih atas kepercayaan dan kesetiaan dalam memilih produk kami. Kami sangat menghargai hubungan yang telah kami bangun. Kami berkomitmen untuk memenuhi harapan dan memberikan pelayanan terbaik. Terima kasih atas kesempatan untuk melayani pengguna produk kami!

Salam Hormat

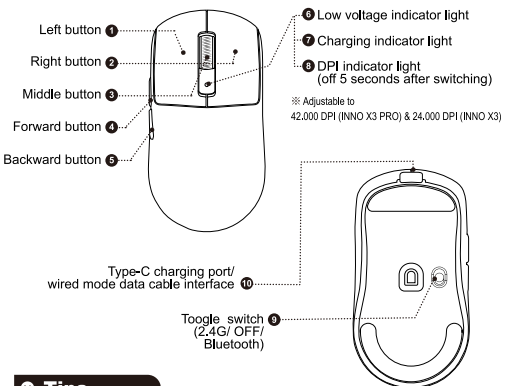
VortexSeries

Product Description

English

VORTEXSERIES INNO X3		
MODEL SERIES	INNO X3 PRO	INNO X3
SIZE DIMENSIONS (L X W X H)	117.3 mm x 61.6 mm x 37.9 mm	
COATING	ICE COATING	
SENSOR	PIXART PAW 3950 MAX	PIXART PAW 3311
MCU	NORDIC 52840	
TRACKING SPEED	750 IPS	400 IPS
ACCELERATION	50 G	40 G
MAX DPI	ADJUSTABLE TO 42,000 DPI	ADJUSTABLE TO 24,000 DPI
WEIGHT	39 g ± 3 g	
MICRO SWITCH	OMRON D2FP-FN2 OPTICAL MICRO SWITCH 80M	HUANO BLUE SHELL BLUE DOT 50M
SCROLL ENCODER	F-SWITCH ENCODER	
FEET MATERIAL	PTFE	
CONNECTIVITY	WIRED USB TYPE C, WIRELESS DONGLE 2.4G, BLUETOOTH	
WIRELESS TECHNOLOGY	SMART SPEED WIRELESS	
POLLING RATE	UP TO 8000Hz	UP TO 1000Hz
BATTERY CAPACITY	250mAh	

Button Function Description



Tips

1. Sleep mode

- Light Sleep: The mouse immediately enters light sleep after it stops working.
- Deep Sleep: The mouse enters deep sleep without any operation for 10 minutes.

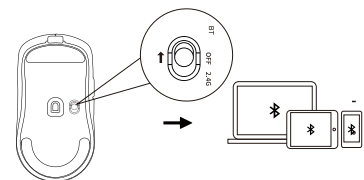
2. Sleep wake-up method

- Light Sleep: Wake up the mouse by moving it.
- Deep Sleep: Press any key to wake up the mouse.

3. Hardware connection: Insert the product's USB plug into the USB 1.1 or above port (when the product is used for the first time, an automatic hardware installation prompt will pop up in the lower right corner of the computer)

Connection mode

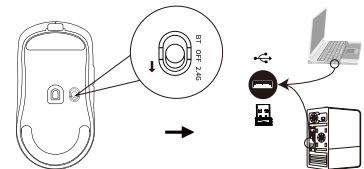
1. Bluetooth connection method:



1. The power switch must be in the Bluetooth segment;

2. Press and hold the left, middle, and right mouse buttons simultaneously for about three seconds until the Bluetooth light flashes quickly. Then, enable Bluetooth on your mobile phone or other device that needs to be paired. When "INNO X3" appears, select it to connect. Once the connection is successful, the pairing light will remain on briefly and then turn off.

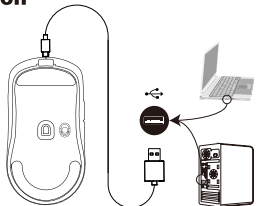
2. Wireless dongle 2.4G method:



1. When you want to use the 2.4G channel of the mouse, turn the power switch to the 2.4G position. Then, take out the 2.4G receiver and plug it into a free USB port on your computer. The computer will automatically install the necessary configuration software. When the installation is complete, the computer will prompt that the mouse is ready for use. If the computer does not respond when you plug in the receiver, try using a different USB port. The computer will automatically install the corresponding software. Generally, the computer will prompt that the installation is complete and the mouse can be used, indicating that the 2.4G pairing was successful. Alternatively, the mouse light will remain on briefly and then turn off.

3. Wired mode connection method

Use the provided TYPE-C cable to connect the mouse to the computer. When the cable is plugged in, the mouse will default to wired mode and begin charging. You can use the mouse normally; the computer screen pointer will move as you move the mouse.



PRECAUTIONS

- ⚠ It is forbidden to immerse the mouse in liquid or spray the mouse with liquid
- ⚠ It is forbidden to use the mouse in high temperature and high humidity environment
- ⚠ Do not place the mouse in an open flame
- ⚠ Violence against pressing the mouse is prohibited
- ⚠ Do not disassemble the mouse

KARTU GARANSI

Nama : _____

Alamat : _____

Kota : _____

Provinsi : _____

Negara : _____

Email : _____

Nomor Telepon : _____

Nama Produk : _____

Tanggal Membeli : ____/____/____(DD/MM/YYYY)

TTD :

(Nama & Tanggal)

MORE INFORMATION :

🎵 📱 📷 | VORTEXSERIES