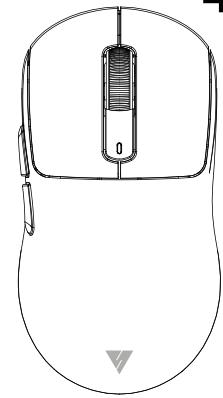


72.5mm

105mm



INNO X2 4K/8K



**4K ON WIRELESS/8K ON WIRED
TRI MODE LIGHTWEIGHT MOUSE**

User Manual



EN

Thank you for choosing our VortexSeries product. We hope it brings you an enhanced user experience. Your feedback is valuable to us as we continuously strive to improve our products and services.

PRODUCT DESCRIPTION

1. Product model : INNO X2 4K/8K
2. Interface: USB-Type-C
3. Connectivity: USB, 2.4G, Bluetooth
4. Sensor: Original Phase PAW3395
5. Frequency: 2402MHz - 2480MHz
6. Return rate (HZ):
2.4G: 125/ 250/ 500/ 1000 / 2000/ 4000HZ (drive adjustable)
Wired: 125/ 250/ 500/ 1000/ 2000/ 4000/ 8000HZ (drive adjustable)
Bluetooth: 133HZ
7. Tracking Speed: 650IPS
8. Acceleration: 50G
9. DPI Settings: 800 (Red), 1600 (Green), 2400 (Blue), 3200 (Cyan), 5000 (Yellow), 26000 (Purple)
10. Charging: 280mA current, 5V voltage
11. Weight: ± 60g (Mouse)
12. Dimensions: 118.5mm x 61mm x 39.7mm
13. Cable: Type-C, 1.5m length
14. Wireless Range: Up to 10 meters
15. Switch Brand: Kailh, 80 million clicks
16. Supported OS: XP, Win7, Win8, Win10, Win11, Mac OS, Android, Linux
17. Sleep Mode Current: 0.3mA (Light Sleep), ~60uA (Deep Sleep)

01

BUTTON FUNCTION DESCRIPTION

1. Left click
2. Right click
3. Scroll Wheel
4. Forward key
5. Backward key
6. DPI button
7. Bluetooth Channel Switch/Force Pairing (3-Second Long Press)
8. Power Toggle (2.4G-OFF-Bluetooth)
9. Receiver Storage Compartment
10. Type-C Interface
11. Indicator Lights: Charging (Purple), Low Voltage (Flashing Red), Fully Charged (Steady Green)
12. DPI Indicator Light (Auto Off After 5 Seconds)
13. Mode indicator light: 2.4G (red), X3-5.4 (blue)
Short press to switch Bluetooth channels, long press for 3 seconds to force code pairing
14. DPI : 800(red) - 1600 green (default) - 2400 (blue) - 3200 (cyan) - 5000 (yellow) - 26000 (purple)

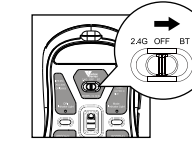
Tips :

1. **Sleep Mode :**
(1) Light Sleep: The mouse immediately enters light sleep after it stops working.
(2) Deep Sleep: The mouse enters deep sleep without any operation for 10 minutes.
 2. **Sleep Wake-Up Methods :**
(1) Light Sleep: Wake up the mouse by moving it.
(2) Deep Sleep: Press any key to wake up the mouse.
- Hardware Connection:**
To set up the product, insert the USB plug into a USB 1.1 or above port. When using the product for the first time, an automatic hardware installation prompt will appear in the bottom right corner of your computer.

02

CONNECTION MODE

Bluetooth connection method:



1. Ensure that the power toggle is in the Bluetooth position, and both Bluetooth mode lights (BT1 and BT2) are illuminated in green (BT1) and blue (BT2).
Short press the button to cycle through Bluetooth channels. When you select BT1 (version 5.2), the BT1 channel light will flash green. When choosing BT2 (version 5.4), the BT2 channel light will flash blue.

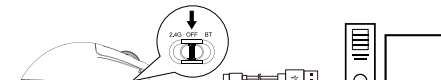
To pair with devices using Bluetooth channel 1 (BT1):

- a. Press and hold the button for about three seconds.
- b. The BT1 mode light will rapidly flash green.
- c. Activate the Bluetooth feature on your mobile phone or other devices that need pairing.
- d. Look for "INNO X2 PRO 1 mouse" and connect promptly.
- e. After successful pairing, the mode light will briefly turn solid green and then turn off.

To pair with devices using Bluetooth channel 2 (BT2):

- a. Press and hold the button for about three seconds.
- b. The BT2 mode light will rapidly flash blue.
- c. Activate the Bluetooth feature on your mobile phone or other devices that need pairing.
- d. Look for "INNO X2 PRO 2 mouse" and connect promptly.
- e. After successful pairing, the pairing light will remain solid blue for about 1 second and then turn off.

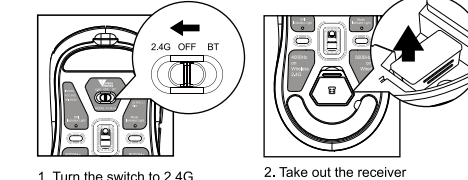
WIRED MODE CONNECTION METHOD



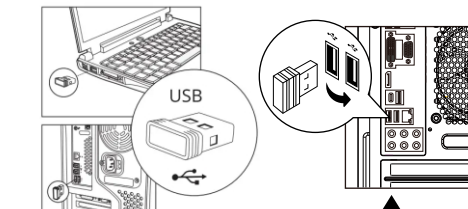
To connect the mouse to your computer in wired mode, simply use the provided TYPE-C cable to establish the connection. Make sure the mouse is switched to the "OFF" position before plugging in the cable. Once the cable is securely connected, you'll be able to move the mouse, and the computer screen pointer will respond, allowing you to use the mouse in its wired mode effortlessly.

03

2.4G connection method:



1. Turn the switch to 2.4G
2. Take out the receiver
3. Plug the receiver into the computer USB port
The computer will automatically install the configuration software



If you don't receive a response when plugging in the receiver into your computer, please try using another available USB port as an alternative.

If the connection is blocked or if the signal is lost, you can resolve the issue by following these steps:

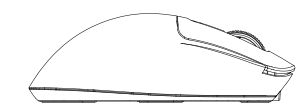
1. Repeat steps 1, 2, and 3 as previously instructed.
2. To initiate the code matching process, press and hold the code button for approximately three seconds. During this process, the 2.4G channel light will rapidly flash red.
3. Once the pairing is successful, the light will remain steady red for one second and then automatically turn off. At this point, the mouse will be ready for normal use.

04

PRECAUTIONS

- ⚠ **Avoid Liquid Exposure:** Do not immerse the mouse in any liquid or spray it with liquid. Liquid exposure can damage the internal components.
- ⚠ **Environmental Conditions:** Avoid using the mouse in high-temperature and high-humidity environments, as extreme conditions can affect its performance and durability.
- ⚠ **Open Flame Safety:** Never place the mouse near an open flame or expose it to sources of high heat.
- ⚠ **Handle with Care:** Avoid any form of violence or excessive force when using or pressing the mouse buttons. Gentle, controlled usage is recommended.
- ⚠ **No Disassembly:** Do not attempt to disassemble the mouse on your own. Any disassembly could void warranty and potentially damage the mouse. If maintenance or repair is required, seek professional assistance.

PACKING LIST



Mouse*1



2.4G Receiver*1



Wire*1



Manual*1

05