

ONI R1

TRIPLE MODE LIGHTWEIGHT MOUSE

Thank you very much for purchasing our VORTEX SERIES product, and hope it can bring you a new operation and feeling. At the same time, we look forward to getting your valuable suggestions on our products, and we will continue to provide you with better products and services.

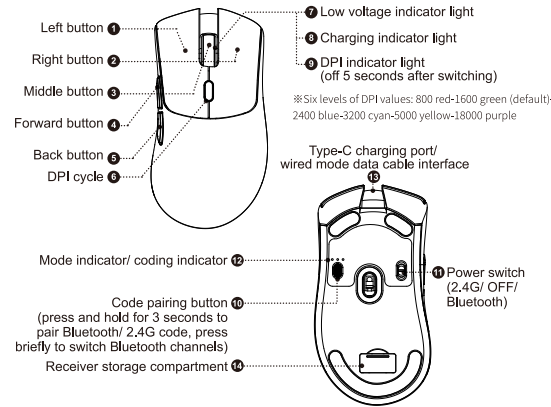
Product Description

1. Product model: R1
2. Product interface type: USB-Type-C
3. Product connection method: USB, 2.4G, Bluetooth
4. Product optical sensor: Original phase PAW3311
5. Transmission frequency: 2402MHz—2480MHz
6. Rate of return (HZ): 125/ 250/ 500/ 1000 HZ (driver adjustable)
7. Frame rate (IPS): 400IPS
8. Maximum acceleration (G): 40G
9. DPI value and corresponding color: 800 (red)-1600 (green)-2400 (blue)-3200 (yellow)-5000 (cyan)-18000 (purple)
10. Charging current: 280mA
11. Charging voltage: 4.25v-5.25v
12. Product weight: 55g±3g
13. Product size: 123.5*64*41mm
14. Data cable interface (length): Type-C/ 1.5 meters
15. Wireless transmission distance: 10 meters
16. Switch brand and service life: Huanyu 20 million times
17. Support operating systems: XP, Win7, Win8, Win10, Win11, Mac OS, Android, Linux, etc.

PACKING LIST

Mouse*1 2.4G Receiver*1 Wire*1 Manual*1 Charging base*1

Button Function Description

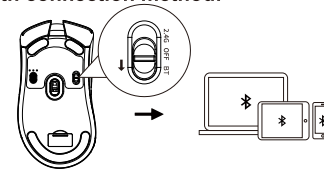


Kind tips:

1. **Sleep mode**
 - (1) The mouse stops working and immediately enters shallow sleep.
 - (2) The mouse will enter deep sleep if there is no operation for 10 minutes.
2. **Sleep wake-up method**
 - (1) Shallow sleep mobile wake-up
 - (2) Deep sleep button wake-up
3. **Hardware connection:** Insert the product's USB plug into the USB 1.1 or above port (when the product is used for the first time, an automatic hardware installation prompt will pop up in the lower right corner of the computer)

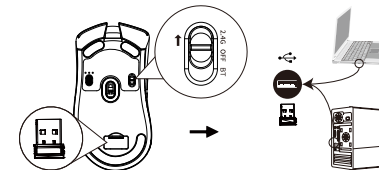
Connection mode

1. Bluetooth connection method:



1. The power switch must be in the Bluetooth segment, and the Bluetooth mode lights are green (BT1) and blue (BT2);
2. Short press the ⑩ button to select the Bluetooth channel. When BT1 (R1 mouse 1) is selected, the Bluetooth channel light of BT1 flashes green. When the BT2 (R1 mouse 2) channel is selected, the BT2 channel light flashes blue;
3. Press and hold the ⑩ button for about three seconds, the Bluetooth channel 1 mode light will flash green quickly. At that time, please turn on the Bluetooth of your mobile phone or other device that needs to be paired to search. When "R1 mouse 1" appears, please connect in time. After the connection is successful, the code matching light will stay on green for about 1 second, and then turn off; Press and hold the ⑩ button for about three seconds, the Bluetooth channel 2 mode light will flash blue quickly. At that time, please turn on the Bluetooth of your mobile phone or other device that needs to be paired to search. When "R1 mouse 2" appears (you can change the name required by the customer), please connect in time. After the connection is successful, the pairing light will stay on blue for about 1 second, and then turn off.

2. 2.4G connection method:



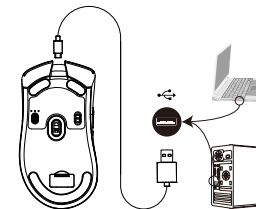
1. When you want to use the 2.4G channel of the mouse, turn the power switch to the 2.4G position, then take out the 2.4G receiver of the mouse, and plug the receiver into the free USB port of the computer. At this time, the computer will automatically install the configuration software, when the computer prompts that the installation is complete and can be used, the mouse can be connected to the computer. If the computer does not respond when you plug in the receiver, you need to change another USB port. At this time, the computer will automatically code and install the corresponding adaptation software. Generally, the computer will prompt: The installation is complete and can be used, which means that the mouse is the same as the computer 2.4G Coding was successful.

2. If there is a connection failure or signal loss in the 2.4G signal, please follow the steps below:

- (1) Turn the power switch to 2.4G;
- (2) Press and hold the code matching button, the code matching mode light flashes red quickly;
- (3) After the code is successfully matched, the mode light turns red for about one second, and then goes out.

3. Wired mode connection method:

Use the provided TYPE-C cable to connect it to the computer. When the cable is plugged in, the mouse defaults to wired mode and is charging. When you move the mouse, the computer screen pointer can move and the mouse can be used normally.



PRECAUTIONS

- ⚠ It is forbidden to immerse the mouse in liquid or spray the mouse with liquid
- ⚠ It is forbidden to use the mouse in high temperature and high humidity environment
- ⚠ Do not place the mouse in an open flame
- ⚠ Violence against pressing the mouse is prohibited
- ⚠ Do not disassemble the mouse