

# IGNIX F1 F1 PRO

GAMING MOUSE  
BLACK | WHITE

MANUAL BOOK

TERIMA KASIH  
TELAH MENGGUNAKAN PRODUK  
VORTEXSERIES

Pelanggan Yang Terhormat,

Terima kasih atas kepercayaan dan kesetiaan dalam memilih produk kami. Kami sangat menghargai hubungan yang telah kami bangun. Kami berkomitmen untuk memenuhi harapan dan memberikan pelayanan terbaik. Terima kasih atas kesempatan untuk melayani pengguna produk kami!

Salam Hormat



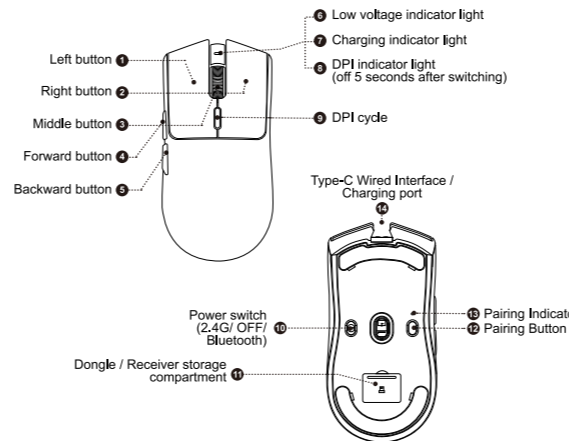
VortexSeries

## Product Description

English

VortexSeries IGNIX F1		
MODEL SERIES	IGNIX F1	IGNIX F1 PRO
SIZE   DIMENSIONS (L X W X H)	121.48mm x 61.27mm x 38.20mm	
COATING	STANDARD COATING	ICE COATING
SENSOR	PIXART PAW 3311	PIXART PAW 3395 PRO
MCU	Broadcom BK3633	
TRACKING SPEED	400 IPS	700 IPS
ACCELERATION	40G	60G
MAX DPI	ADJUSTABLE to 24,000 DPI	ADJUSTABLE to 40,000 DPI
WEIGHT	51 g ± 3g	
MICRO SWITCH	HUANO TRANSPARENT BLUE SHELL PINK DOT MICRO SWITCH 80M CLICKS	OMRON D2FC-F-7N(100M) MICRO SWITCH 100M CLICKS
SOFTWARE	WEB DRIVER SUPPORT & DOWNLOADABLE SOFTWARE	
SCROLL ENCODER	F SWITCH ENCODER	
FEET MATERIAL	MAGIC ICE SKATES	
CONNECTIVITY	WIRED USB TYPE C, WIRELESS DONGLE 2.4G, BLUETOOTH	
POLLING RATE	Up to 1000Hz	
BATTERY CAPACITY	300mAh	

## Button Function Description



### Kind tips :

#### 1.Sleep Mode

- Light Sleep: The mouse immediately enters light sleep after it stops working.
- Deep Sleep: The mouse enters deep sleep without any operation for a long a few minutes

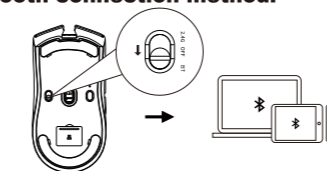
#### 2.Sleep Wake Up Method

- Light Sleep: Wake up the mouse by moving it
- Deep Sleep: Press any key to wake up the mouse

#### 3.Hardware connection: Insert the product's USB plug into the USB port

## Connection Mode

### 1.Bluetooth connection method:



1.Ensure the power switch is set to Bluetooth mode. The Bluetooth indicators will light up: green for BT1 and blue for BT2.

2.Press the **BT** button briefly to switch Bluetooth channels:

BT1 (IGNIX F1 or IGNIX F1 PRO (for the Pro version): Light flashes green.

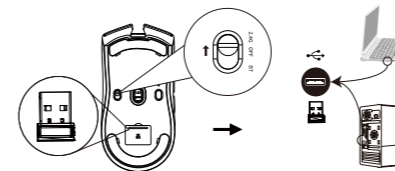
BT2 (IGNIX F1 or IGNIX F1 PRO (for the Pro version): Light flashes blue.

To pair via Bluetooth:

BT1: Hold **BT** for 3 seconds until the green light flashes. Enable Bluetooth on your device and connect to IGNIX F1 or IGNIX F1 PRO (for the Pro version). The light stays on briefly after pairing.

BT2: Hold **BT** for 3 seconds until the blue light flashes. Connect to IGNIX F1 or IGNIX F1 PRO (for the Pro version). The light stays on briefly after pairing.

### 2.Wireless dongle 2.4G method:

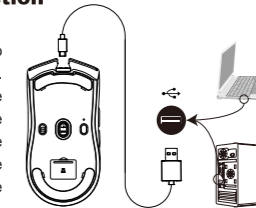


1. To use the mouse on the 2.4G channel, switch the power button to the 2.4G position. Then, remove the 2.4G receiver and plug it into an available USB port on your computer. The computer will automatically recognize the configuration. If there's no response when you plug in the receiver, try using a different USB port. Alternatively, the mouse light will briefly stay on and then turn off.

Visit [vortexseries.net](http://vortexseries.net) to download the software and find information about the product warranty and other details.

### 3.Wired mode connection method

Use the provided TYPE-C cable to connect the mouse to the computer. Once the cable is plugged in, the mouse will default to wired mode and begin charging. You can use the mouse normally, and the computer screen pointer will move as you move the mouse.



### PRECAUTIONS

- It is forbidden to immerse the mouse in liquid or spray the mouse with liquid
- It is forbidden to use the mouse in high temperature and high humidity environment
- Do not place the mouse in an open flame
- Violence against pressing the mouse is prohibited
- Do not disassemble the mouse